



ORNG CSZ Planning Efforts



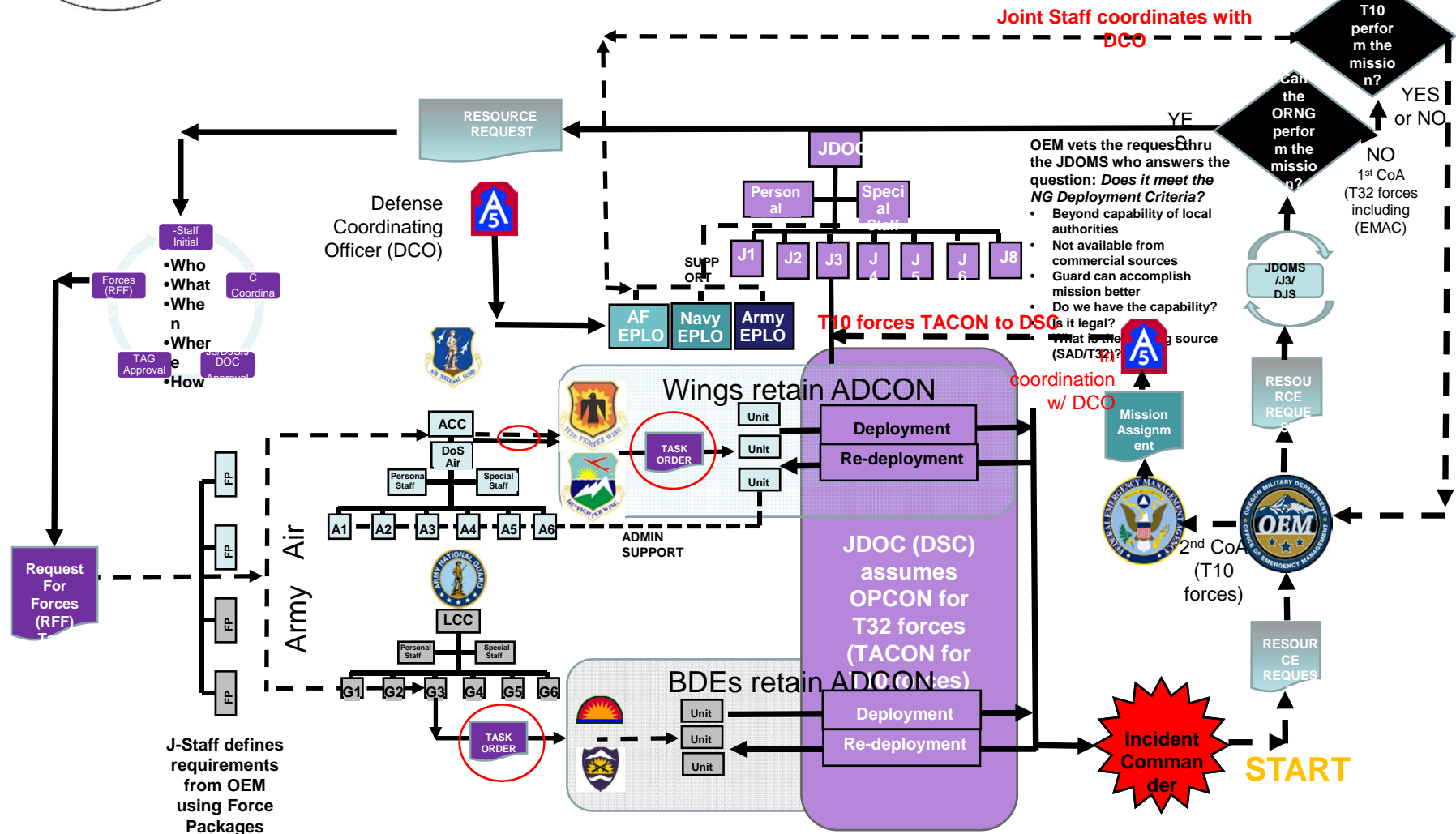
Agenda



- Task Order Process
- Current CSZ Plan
- PDMAs vs EMAC
- Current PDMAs
- Current EMACs
- Way Ahead
- Joint Planning Process



Task Order Process – Detail (Military Option)



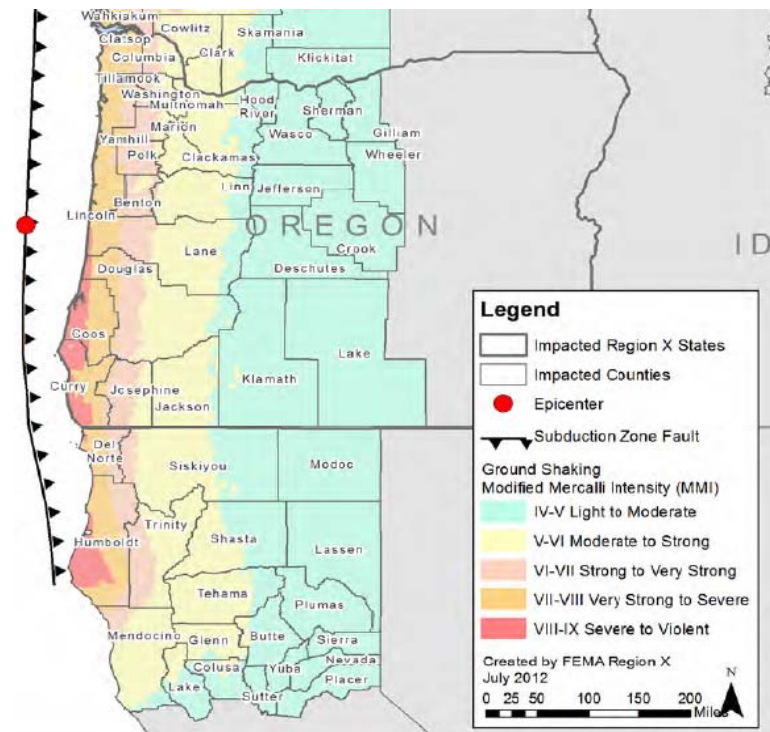


Operational Environment Situation



Cascadia Subduction Zone Earthquake Scenario – Planning Assumptions

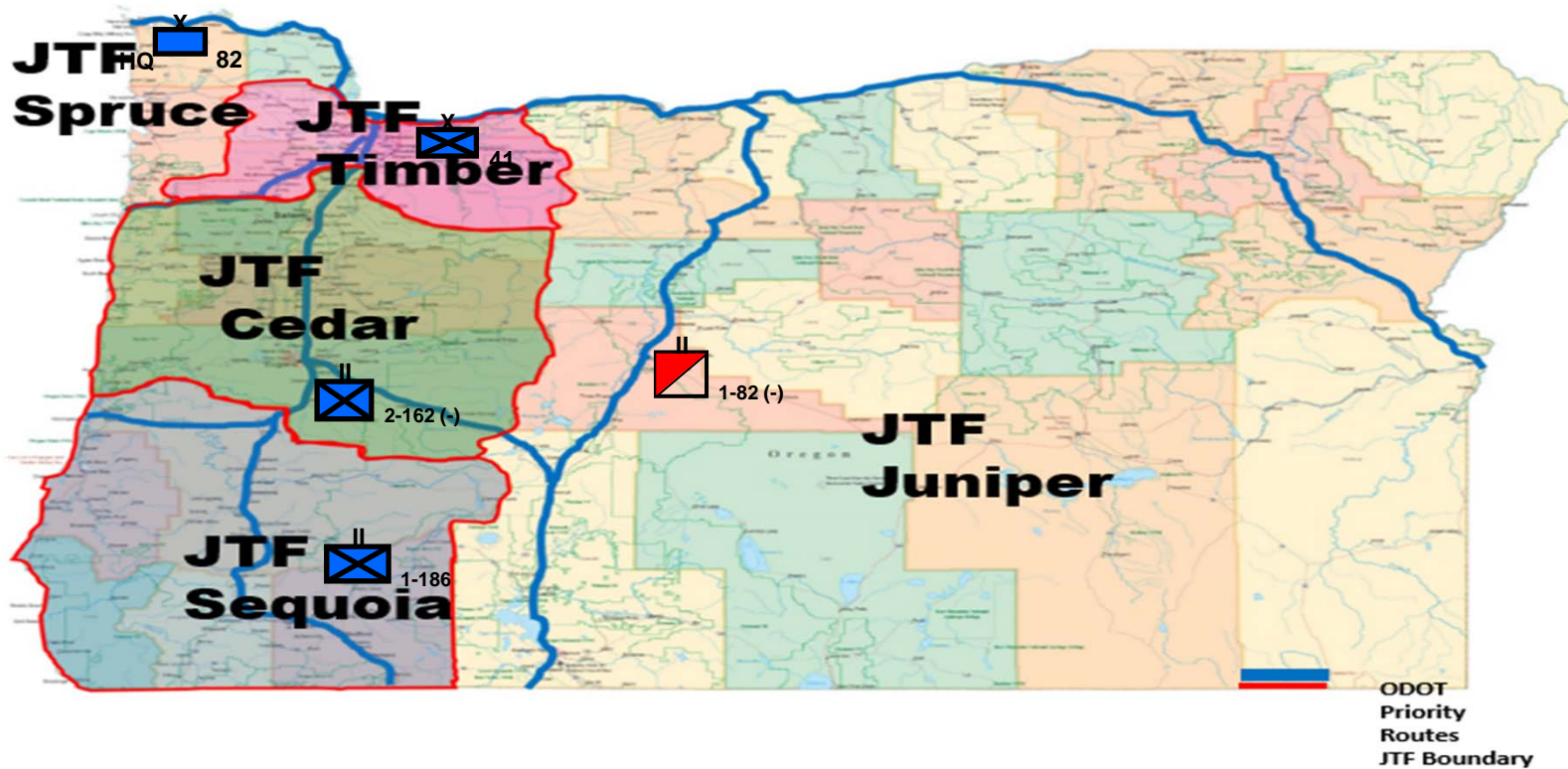
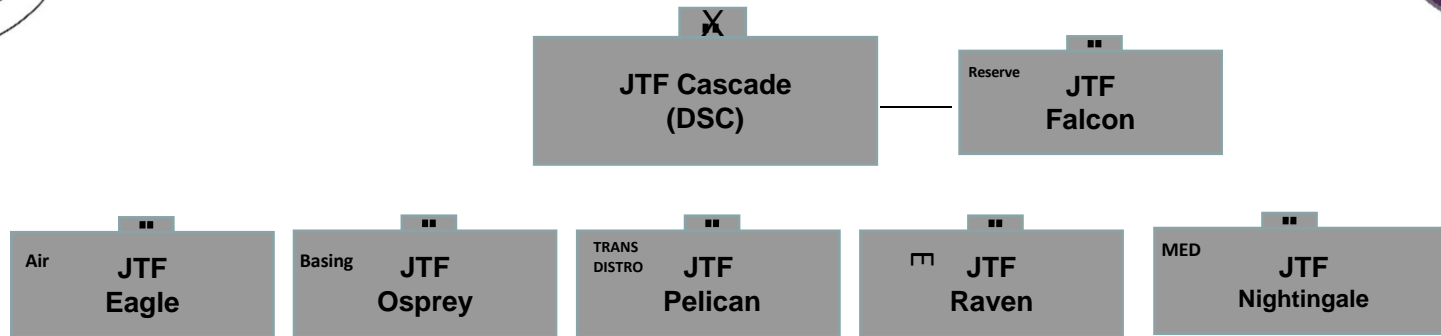
- CSZ event occurs on February 6, 0941, weekday
- Complete rupture of the CSZ fault line
- Epicenter 60 miles off the Oregon coast, or 120 miles west of Eugene
- M9.0 earthquake, with ground shaking lasting up to 5 minutes
- Tsunami with wave heights from 12 to 40 feet at landfall
- Aftershocks of M7.0 or greater
- Additional tsunamis caused by aftershocks



Source: (CSZ) Catastrophic Earthquake and Tsunami Response Plan



Concept of the Operation





Initial LNO Plan



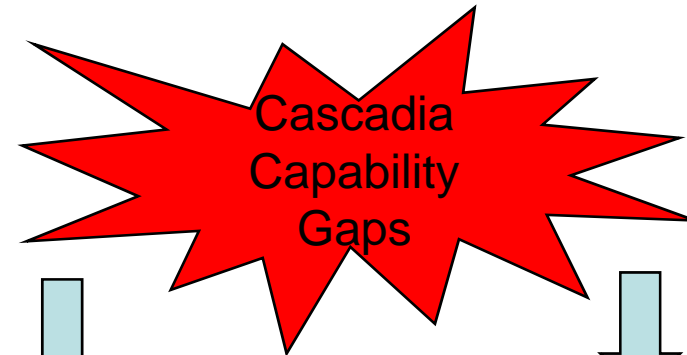
JTF Cascade	JTF Spruce	JTF Timber	JTF Cedar	JTF Sequoia	JTF Juniper	All Functional TF's
ECC LNO	JTF Cascade LNO	JTF Cascade LNO	JTF Cascade LNO	JTF Cascade LNO	JTF Cascade LNO	JTF Cascade LNO
UCG LNO	Clatsop EOC	Yamhill EOC	Lincoln EOC	Coos EOC	Hood River EOC	
Other Gov. Agencies as Applicable	Columbia EOC	Washington EOC	Polk EOC	Douglas EOC	Wasco EOC	
	Tillamook EOC	Multnomah EOC	Marion EOC	Curry EOC	Jefferson EOC	
		Clackamas EOC	Linn EOC	Josephine EOC	Deschutes EOC	
		Portland Metro EOC	Benton EOC	Jackson EOC	Klamath EOC	
			Lane EOC		All other Eastern Oregon County EOC's as required (18 Total)	

*Note: Each JTF will make contact with each County EOC within their AOR and provide an LNO for all EOCs that are active.

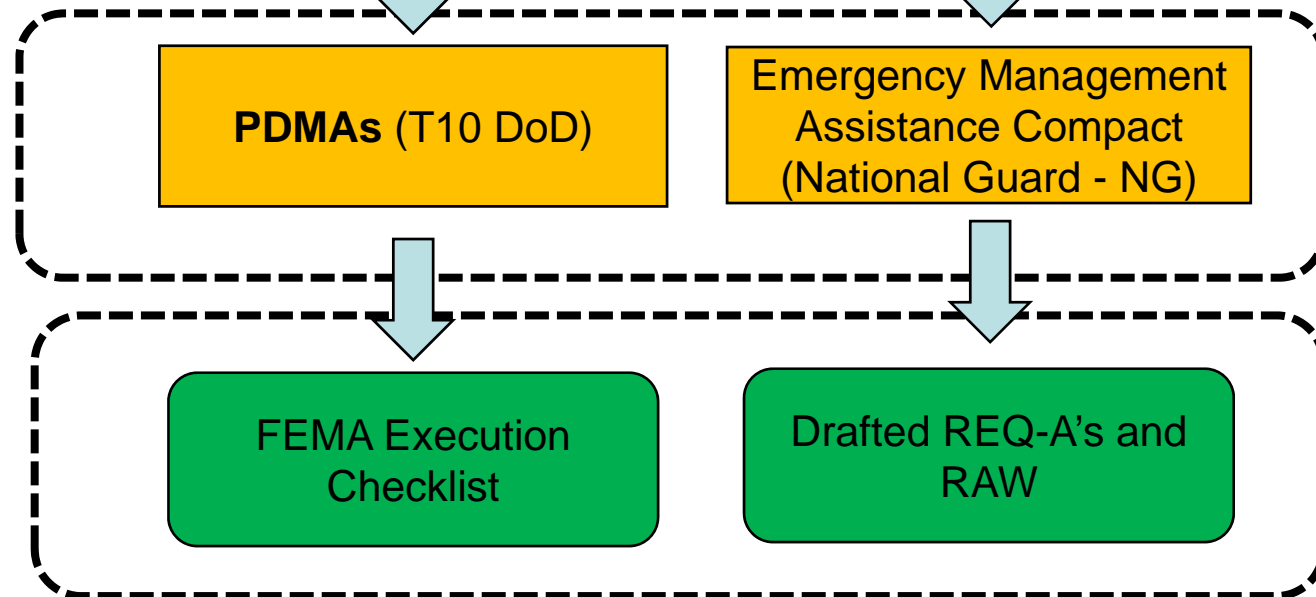


PDMA vs EMAC

These are capabilities that only military can provide.



Coordinated through ORNG/OEM and Emergency Support Function (ESF) Partners



ORNG Pre-planned Military Response

Criteria for selecting T10 vs NG based on: Capability, Speed of Response, and Task Org Integrity under DSC



CSZ T10 PDMAs



ESF 1: Transportation

- Oregon Department of Transportation (ODOT) requesting one PDMA for sea to shore route clearance along three primary routes inland

ESF 2: Communication

- Three PDMA Scopes of Work (SOW) pending update on FEMA's CSZ Execution Checklist
- Includes: 1) Satellite Communication Teams, 2) DoD Frequency Teams Management teams, 3) HF Communication Teams

ESF 8: Medical

- Four PDMAs SOW pending update on FEMA's CSZ Execution Checklist
- Includes: 1) Ground Ambulance, 2) Medical Facilities, 3) Air Medevac, 4) Veterinary support services

ESF 12: Energy (Fuel)

- Seven PDMA SOW pending update on FEMA's CSZ Execution Checklist
- Includes: 1) Fuel for first responders, 2) Fuel for self-evac, 3) AVN fuel, 4) Maritime fuel, 5) Fuel Planner, 6) Fuel Testing Kits, 7) Tank Farms
- Two PDMA SOW in review with Defensive Coordinating Element:
- Includes: 1) Fuel Distro, 2) Fuel Point Security



CSZ National Guard EMAC



Annual All Hazards Workshop – Coordinated specific units to fill projected needs for CSZ

- 118 units are AMBER = Coordinated tentative agreements with sourcing states
- 122 units are RED = Identified potential resources with sourcing states
- Will be reviewed annually at All Hazards Workshop

All 118 tentative agreements captured on pre-drafted REQ-A

Resource Allocation Worksheet														Washington		Oregon			
Unit	Size	SRC Code	Quantity	Req1	Region	C2	Task	Force Provider	State	FEMA	Unit	Status	State	FEMA	Unit	Status			
Assault Helicopter Battalion HQs	Battalion	01206K	1	2.1	TF Aviation	TF Aviation	Provide C2 to Assigned, OPCON, TACON, DS Aviation Assets	T-32	WI	V	H/1/147	A	IL	V	H/1/106	A			
Assault Helicopter Company	Company	01207K	1	4.1	TF Aviation	TF Aviation	Provide General Aviation Support	T-32	WI	V	A/1/147	A	IL	V	A/1/106	A			
Assault Helicopter Company	Company	01207K	1	5.1	TF Aviation	TF Aviation	Provide General Aviation Support	T-32	WI	V	B/1/147	A	IL	V	B/1/106	A			
Assault Helicopter Maintenance Company	Company	01209K	1	2.1	TF Aviation	TF Aviation	Provide Aviation Maintenance Support	T-32	WI	V	D/1/147	A	IL	V	D/1/106	A			
CERFP #1 - BN C2	16 Pax	CBRN Enterprise	1	1.1	TF CBRN	TF CBRN	Provide C2 to CERFP	T-32	ME	I	CERFP-ME	A	NV	IX	CERFP-NV	A			
CERFP #1 - DECON Element	75 Pax	CBRN Enterprise	1	1.1	TF CBRN	TF CBRN	Conduct decontamination operations	T-32	ME	I	CERFP-ME	A	NV	IX	CERFP-NV	A			
CERFP #1 - Fatality Search and Recovery Team	11 Pax	CBRN Enterprise	1	1.1	TF CBRN	TF CBRN	Provide Fatality Search and Recovery, augment civil coroners.	T-32	ME	I	CERFP-ME	A	AZ	IX	CERFP-NV	A			
CERFP #1 - Medical Capability	45 Pax	CBRN Enterprise	1	1.1	TF CBRN	TF CBRN	Provide emergency medical capability	T-32	ME	I	CERFP-ME	A	NV	IX	CERFP-NV	A			
CERFP #1 - Search and Extraction (S&E)	50 Pax	CBRN Enterprise	1	1.1	TF CBRN	TF CBRN	Conduct limited Technical Search and Extraction	T-32	ME	I	CERFP-ME	A	NV	IX	CERFP-NV	A			
CERFP #2 - BN C2	16 Pax	CBRN Enterprise	1	2.1	TF CBRN	TF CBRN	Provide C2 to CERFP	T-32	NH	I	CERFP-NH	R	WV	III	CERFP-WV	A			
CERFP #2 - DECON Element	75 Pax	CBRN Enterprise	1	2.1	TF CBRN	TF CBRN	Conduct decontamination operations	T-32	NH	I	CERFP-NH	R	WV	III	CERFP-WV	A			
CERFP #2 - Fatality Search and Recovery Team	11 Pax	CBRN Enterprise	1	2.1	TF CBRN	TF CBRN	Provide Fatality Search and Recovery, augment civil coroners.	T-32	NH	I	CERFP-NH	R	WV	III	CERFP-WV	A			
CERFP #2 - Medical Capability	45 Pax	CBRN Enterprise	1	2.1	TF CBRN	TF CBRN	Provide emergency medical capability	T-32	NH	I	CERFP-NH	R	WV	III	CERFP-WV	A			
CERFP #2 - Search and Extraction (S&E)	50 Pax	CBRN Enterprise	1	2.1	TF CBRN	TF CBRN	Conduct limited Technical Search and Extraction	T-32	NH	I	CERFP-NH	R	WV	III	CERFP-WV	A			
CERFP #3 - BN C2	16 Pax	CBRN Enterprise	1	3.1	TF CBRN	TF CBRN	Provide C2 to CERFP	T-32	MN	V	CERFP-MN	A	WV	III	CERFP-WV	A			
CERFP #3 - DECON Element	75 Pax	CBRN Enterprise	1	3.1	TF CBRN	TF CBRN	Conduct decontamination operations	T-32	MN	V	CERFP-MN	A	WV	III	CERFP-WV	A			
CERFP #3 - Fatality Search and Recovery Team	11 Pax	CBRN Enterprise	1	3.1	TF CBRN	TF CBRN	Provide Fatality Search and Recovery, augment civil coroners.	T-32	MN	V	CERFP-MN	A	WV	III	CERFP-WV	A			
CERFP #3 - Medical Capability	45 Pax	CBRN Enterprise	1	3.1	TF CBRN	TF CBRN	Provide emergency medical capability	T-32	MN	V	CERFP-MN	A	WV	III	CERFP-WV	A			
CERFP #3 - Search and Extraction (S&E)	50 Pax	CBRN Enterprise	1	3.1	TF CBRN	TF CBRN	Conduct limited Technical Search and Extraction	T-32	MN	V	CERFP-MN	A	WV	III	CERFP-WV	A			
CERFP #7 - BN C2	16 Pax	CBRN Enterprise	1	7.1	TF CBRN	TF CBRN	Provide C2 to CERFP	T-32	NE	VII	CERFP-NE	R	PR	II	CERFP-PR	A			
CERFP #7 - DECON Element	75 Pax	CBRN Enterprise	1	7.1	TF CBRN	TF CBRN	Conduct decontamination operations	T-32	NE	VII	CERFP-NE	R	PR	II	CERFP-PR	A			

G	Resource coordinated, EMAC initiated.	Resource coordinated, EMAC initiated.
A	Resource provider gave tentative agreement	Resource provider gave tentative agreement
R	Potential resource provider identified	Potential resource provider identified
B	Resource not located	Resource not located



Joint Planning Process



Joint Planning Process

Step 1	Planning Initiation
Step 2	Mission Analysis
Step 3	Course of Action (COA) Development
Step 4	COA Analysis and Wargaming
Step 5	COA Comparison
Step 6	COA Approval
Step 7	Plan or Order Development

Figure V-1. Joint Planning Process



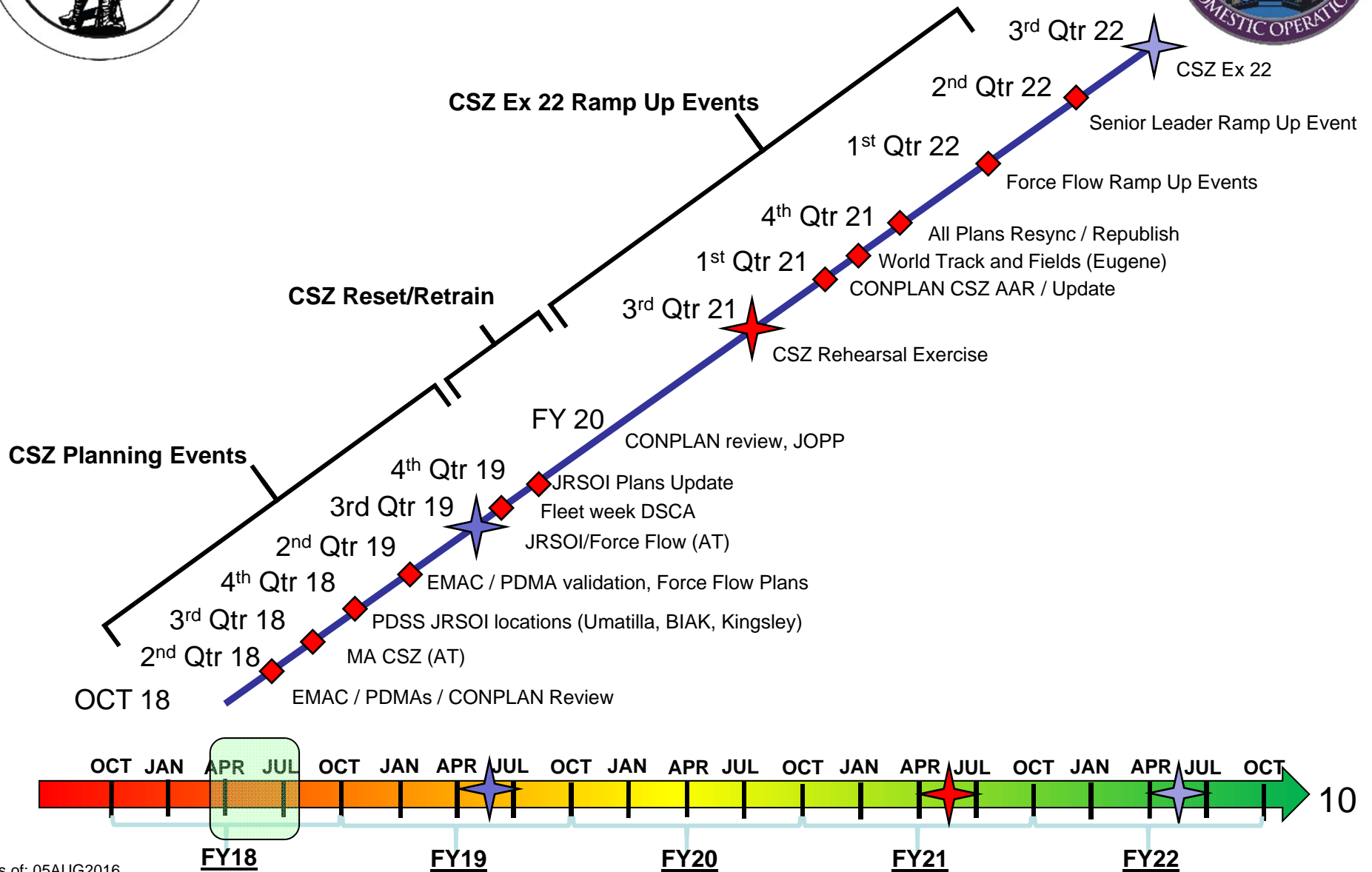
Mission Analysis (MA)



- **Incident Awareness and Assessment Picture (IAA)**
 - What's the scenario?
 - **Essential, Specified, and Implied Tasks**
 - What do we HAVE to do?
 - What were we TOLD to do?
 - What ELSE do we need to do in order to complete those essential and specified tasks?
 - **Facts and Assumptions**
 - What do we know? What assumptions are we making?
 - **Resource Analysis:**
 - What resources are available?
- * Outcome: Capability Gap for the Military during COA development***



Proposed Way Ahead





Questions ?

Contact: MAJ Bobby Lee

Email: robert.s.lee66.mil@mail.mil

Phone: 503-884-0163